

Family Violence: Do you know how to respond?

65% of physical child abuse and 75% of physical domestic violence results in injuries to the head, neck and/or mouth.

You are required by law to report suspected abuse and neglect:

- If it involves a child through age 18, an elder age 65 and older, or a developmentally or physically disabled person of any age
- If you are a mandated reporter and detect physical assault injuries in a patient under your care
- You have immunity and anonymity for reporting
- Your liability for not reporting is up to 6 months in prison or \$1000 fine
- Healthcare provider/patient privilege is not applicable

Indications of possible abuse



Bruising of hard or soft palate from forced oral sex



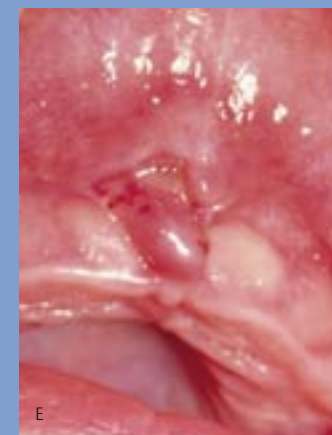
Bruises behind the ear as a result of a blow to the side of the head



Injuries from attempted strangulation may include a linear pattern or thumb bruising



Repeated trauma to the mouth may be confused with Early Childhood Caries



Soft tissue injury (frenum) due to possible forced feeding

Photo Credits:

A. PANDA

B. "The Visual Diagnosis of Child Physical Abuse" 1994, American Academy of Pediatrics

C. "The Visual Diagnosis of Child Physical Abuse" 1994, American Academy of Pediatrics

D. PANDA

E. Duane Spencer, DDS

CS2003-59 (11/03)



Blue Shield of California Foundation
An Independent Licensee of the Blue Shield Association



RADAR

FOR DENTAL PROFESSIONALS/MANDATED REPORTERS

R = RECOGNIZE SIGNS AND SYMPTOMS OF ABUSE/NEGLECT, ROUTINELY SCREEN

A = ASK DIRECT, NON-JUDGMENTAL QUESTIONS WITH COMPASSION

"Please tell me about _____ (injury)"

"Have you been hit, kicked, punched, or otherwise hurt by someone within the past year? If so, by whom?"

"Do you feel safe in your current relationship?"

"Does a partner from a previous relationship make you feel unsafe now?"

D = DOCUMENT YOUR FINDINGS

The dental chart is a legal document

A = ASSESS PATIENT SAFETY

Is there a weapon involved? Is patient in immediate danger?

R = REVIEW, REFER, REPORT

Important numbers:

National Child Abuse Hotline: 1-800-4A-CHILD (1-800-422-4453)

California Youth Crisis Line: 1-800-843-5200

California Elder and Dependant Adult Abuse Hotline: 1-888-436-3600

National Domestic Violence Hotline: 1-800-799-7233 or 1-800-787-3224 (TTY)

These numbers can be found in the front of your local phone book.

Child Protective Services: _____

Law enforcement/local shelter: _____

Adult Protective Services: _____

For more information or to inquire about training opportunities, please call the CDA Foundation at **1-916-443-3382**



Dental Professionals Against Violence